



Spiro2000 DB Transfer Utility

User's Manual

for v1.0

Medikro Oy

Mail address: P.O.Box 54, FIN-70101 Kuopio, Finland
Street address: Kellolahdentie 27, FIN-70460 Kuopio, Finland

Tel: +358-17-283 3000
Fax: +358-17-283 3300
E-mail: medikro@medikro.com
Home page: <http://www.medikro.com>

Business ID: 0288691-7
VAT no.: FI02886917
Domicile: Kuopio





Table of Contents

1	Introduction	4
1.1	Scope.....	4
1.2	Who Should Use This Manual	4
1.3	Terminology, Acronyms and Abbreviations.....	4
1.4	Related Documents	4
2	Installation and uninstallation	5
2.1	Installation	5
2.2	Uninstallation	5
3	Operation	6
3.1	Preparation.....	6
3.1.1	Transfer to a non existing database	6
3.1.2	Transfer of a single database to an existing database	6
3.1.3	Transfer of a multiple MS Access databases to an existing database	6
3.1.4	Transfer settings	8
3.2	Data transfer.....	9
3.2.1	Note of transfer to a non existing database.....	9
3.2.2	Note of transfer of a single database.....	9
3.2.3	Note of transfer of a multiple MS Access databases	9
4	Using a server based database in Spiro2000	10
5	Technical Support.....	11

Figures

Figure 3-1	Example of DSN entries.	7
Figure 3-2	Program window.....	9

Tables

Table 1-1.	The tested database versions	4
Table 1-2.	Terminology, acronyms and abbreviations	4
Table 1-3.	Related documents	4
Table 3-1.	Transfer settings	8



1 Introduction

1.1 Scope

The purpose of this document is to define how Spiro2000 data is transferred between various types of databases.

The database types can be MS Access and MS SQL Server. The source and destination databases may but need not to be of same type.

The tested versions of database types are listed in the table below. The conversion may well apply to also to both previous and latter versions of the databases, but no guarantee can be given.

Table 1-1. The tested database versions

DB type	Version
MS Access	1997 - 8.0.5903 2000 - 9.0.6926 2003 - 11.0.6355
MS SQL Server	2000 - 8.00.194 2005 - 9.00.1116

1.2 Who Should Use This Manual

Database administrators and advanced Spiro2000 users, who want to transfer their data from one database to another.

1.3 Terminology, Acronyms and Abbreviations

Table 1-2. Terminology, acronyms and abbreviations

Term	Description
DSN	Data Source Name
<Installation_folder>	Absolute path to the folder, where this utility has been installed. E.g. "C:\S2000 DB Transfer"

1.4 Related Documents

Table 1-3. Related documents

Product Code	Document
M8304	Medikro Windows Spirometer, User's Manual



2 Installation and uninstallation

2.1 Installation

Copy the folder "S2000 DB Transfer" from the Installation CD to a hard disk. Later in this document the absolute path of that folder is indicated as *<Installation_folder>*.

<Installation_folder> can be e.g. "C:\S2000 DB Transfer".

2.2 Uninstallation

Delete *<Installation_folder>*.



3 Operation

3.1 Preparation

3.1.1 Transfer to a non existing database

Destination database

- Create an empty database and give it appropriate user rights by database managing tools. You can name it to e.g. "MedikroSpirometryResult".
- If SQL Server database is used, Windows NT authentication must be chosen for login verification.
- If MS Access database is used, the database must have the existing table structure. It is recommended to use a copy of MedikroSpirometry.mdb located in <Installation_folder>.
- Continue from the chapter 3.1.2 or 3.1.3 below.

3.1.2 Transfer of a single database to an existing database

Source database

- Create (if not exist) a System DSN named (exactly) MEDIKRO_SPIROMETRY_IN and connect it to the source database. This can be done e.g. by ODBC Data Source Administrative tool, see the Figure 3-1 below.

Destination database

- Create (if not exist) a System DSN named (exactly) MEDIKRO_SPIROMETRY_OUT and connect it to the destination database.

3.1.3 Transfer of a multiple MS Access databases to an existing database

Source databases

- Create (if not exist) a System DSN named (exactly) MEDIKRO_SPIROMETRY_IN and connect it to the database "MedikroSpirometry.mdb" located in <Installation_folder>. The connection can be done e.g. by ODBC Data Source Administrative tool, see the Figure 3-1 below.
- Copy the databases to be transferred to "<Installation_folder>\Source Database".
- **WARNING:** the successfully transferred source databases will be deleted! Please, use copies of original database files here.

Destination database

- Create (if not exist) a System DSN named (exactly) MEDIKRO_SPIROMETRY_OUT and connect it to the destination database.

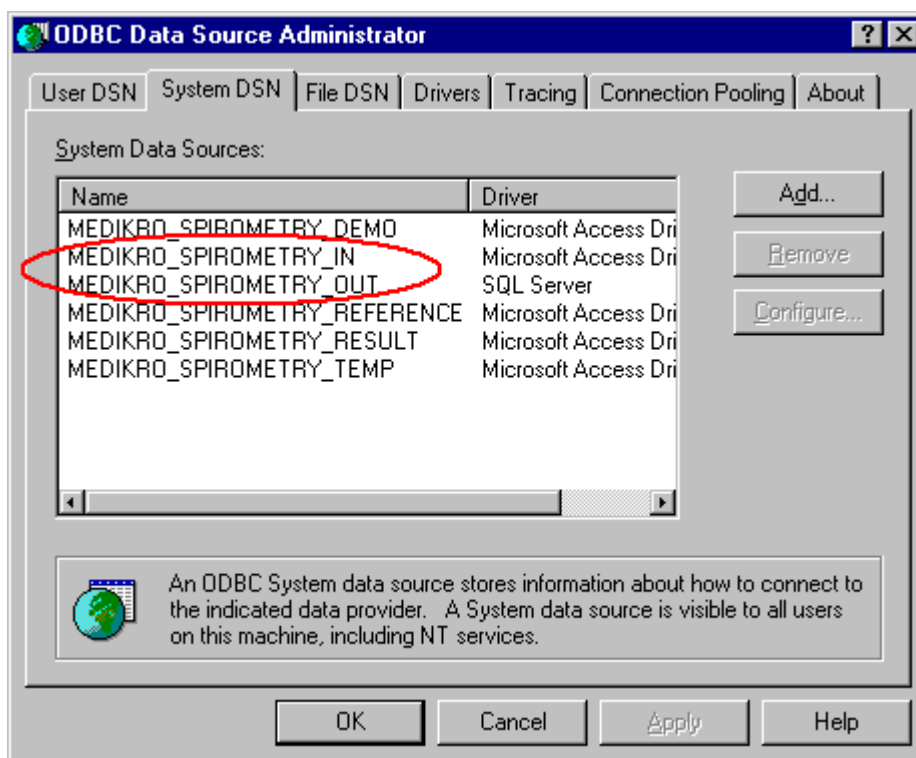


Figure 3-1 Example of DSN entries.



3.1.4 Transfer settings

The transfer settings are found in the file "DB Transfer.ini". They are similar to respective HIS settings of Spiro2000 software. They are listed in the Table 3-1 and explained below.

WARNING: The default settings are planned for a quick and smooth data transfer. They should be adjusted only for weighty reasons (e.g. Patient Code is used instead of Personal ID or if there are conflicts in the person identification).

Import mode

Insert. The source data is discarded in a conflict with the destination database. Incoming person information will be discarded for the persons existing in the destination database. Similarly, incoming sessions' information will be discarded for those sessions, which exist in the destination database.

Update. The source data overrides database information. Incoming person information will replace personal information for the persons existing in the destination database. Similarly, incoming sessions' information will replace the sessions, which exist in the destination database.

Check identification

It can be configured, whether the identification of a transferred person is always manually checked.

WARNING: the check is unpractical for large databases.

PersonalId, PatientCode, Last Name, First Name and/or Date of Birth

The default identification criteria can be chosen. Persons can be identified by PersonalId, PatientCode, Last Name, First Name and/or Date of Birth. (In the manual check window these settings can also be changed temporarily.)

Table 3-1. Transfer settings

Setting	Values and their meaning	Default
Import Mode	1 = Insert 2 = Update	1
Check identification	0 = no manual identification check 1 = manual identification check for each patient	0
Personal ID Check	0 = not used in identification 1 = used in identification	1
Patient Code Check	0 = not used in identification 1 = used in identification	0
Last name Check	0 = not used in identification 1 = used in identification	0
First name Check	0 = not used in identification 1 = used in identification	0
Date of Birth Check	0 = not used in identification 1 = used in identification	0



3.2 Data transfer

Run the program "DB Transfer.exe" located in the <Installation_folder>. The transfer starts immediately and the program window appears, see Figure 3-2.

You must have full permission to <Installation_folder>, its subfolders, source database(s) and destination database. The database(s) to be transferred must not be accessed by others at the same time.

The data transfer may take from minutes to several hours or even days depending on database sizes, data communication speeds, system performance rates etc. The transfer may be interrupted and, if restarted, the transfer starts from where it was stopped. (If you want to transfer the whole database from the start after the interruption, you must first transfer it completely.)

In the case of person identification conflict, the manual check window is displayed. The operator can resolve the conflict by changing person identification settings temporarily.

The data transfer tries a recovery in case of possible database connection (and other) errors. The number of occurred errors is shown in the program window, see Figure 3-2. If one or more errors occur, an error log file "<Installation_folder>\ErrorLog.xml" is created.

3.2.1 Note of transfer to a non existing database

The program builds the needed table and index structure to the database pointed by DSN MEDIKRO_SPIROMETRY_OUT (if not MS Access type database).

3.2.2 Note of transfer of a single database

The program transfers the database pointed by DSN MEDIKRO_SPIROMETRY_IN to the database pointed by DSN MEDIKRO_SPIROMETRY_OUT.

3.2.3 Note of transfer of a multiple MS Access databases

Each database located in "<Installation_folder>\Multiple Databases" is transferred to the database pointed by DSN MEDIKRO_SPIROMETRY_OUT.

WARNING: the successfully transferred source databases will be deleted! Please, use copies of original database files here.

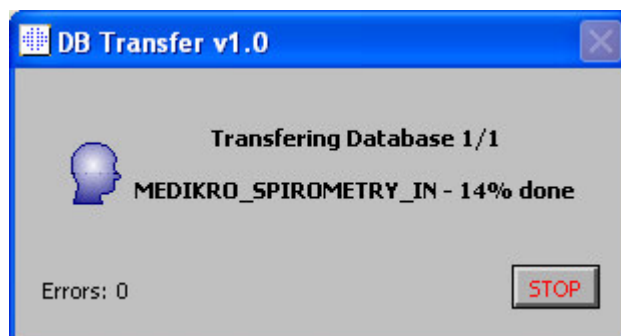


Figure 3-2 Program window



4 Using a server based database in Spiro2000

In a PC, where Spiro2000 has been installed, connect a System DSN of the used spirometry database (normally MEDIKRO_SPIROMETRY_RESULT) to the spirometry database at the server.

Alternatively, create a new System DSN for the server based database and change database DSN in Spiro2000's settings. The DSN name must start with "MEDIKRO" -string, the proper name would be e.g. MEDIKRO_SPIROMETRY_MS_SQL.

Note: Windows NT authentication must be chosen for login verification.

Server based databases can be used in any Spiro2000 version.



5 Technical Support

If you have any questions or problems regarding how to use these conversion utilities, please contact our technical support.

Web: <http://www.medikro.com>

Tel: +358 17 283 3000

Fax: +358 17 283 3300

E-mail: technicalsupport@medikro.com